

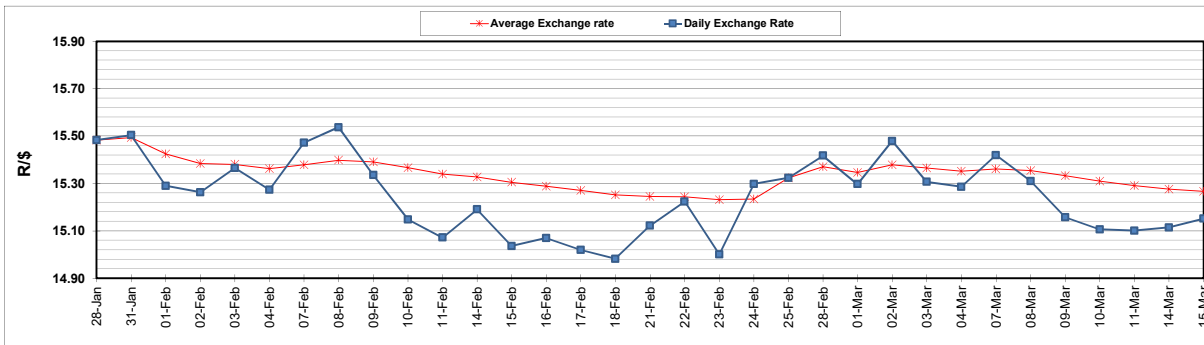
	PETROL 95 ULP	PETROL 93 ULP & LRP	DIESEL 0.05%	DIESEL 0.005%	ILL. PAR.
GAUTENG PUMP PRICE (SA c/l) AS FROM 02/03/2022	2,160.000	2,135.000	-	-	-
WHOLESALE PRICE (SA c/l) AS FROM 02/03/2022	-	-	1,948.880	1,955.280	1,318.688
SINGLE NATIONAL MAXIMUM RETAIL PRICE	-	-	-	-	1,690.000
BASIC FUEL PRICE - 15/03/2022 (SA c/l)	1,175.114	1,150.060	1,194.258	1,216.240	1,169.988
PRESS RELEASE CONTRIBUTION TO BFP 02/03/2022 - 15/03/2022 (SA c/l)	1,100.270	1,085.270	1,107.630	1,114.030	1,097.128
UNIT OVER/(UNDER) RECOVERY - 15/03/2022 (SA c/l)	(74.844)	(64.790)	(86.628)	(102.210)	(72.860)
AVERAGE BASIC FUEL PRICE 25/02/2022 - 15/03/2022	1,285.159	1,262.614	1,372.413	1,391.940	1,320.584
AVERAGE UNIT OVER/(UNDER) RECOVERY 25/02/2022 - 15/03/2022	(215.037)	(207.491)	(294.552)	(308.602)	(251.379)

ANALYSIS MOVEMENT OF AVERAGE OVER/(UNDER) RECOVERY

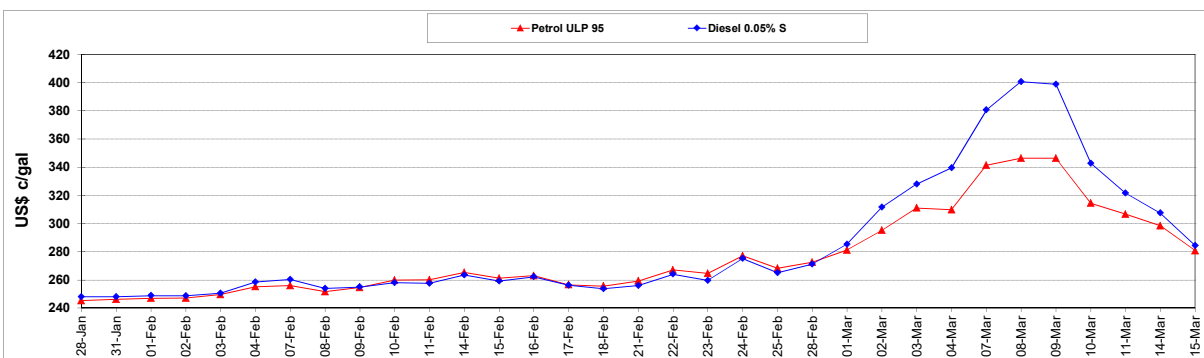
	PETROL 95	PETROL 93	DIESEL 0.05%	DIESEL 0.005%	ILL. PAR.
- MOVEMENT IN INTERNATIONAL PRODUCT PRICES	(212.284)	(204.788)	(291.612)	(305.621)	(248.550)
- MOVEMENT IN EXCHANGE RATE	(2.753)	(2.704)	(2.940)	(2.981)	(2.829)
AVERAGE UNIT OVER/(UNDER) RECOVERY 25/02/2022 - 15/03/2022	(215.037)	(207.491)	(294.552)	(308.602)	(251.379)

R/\$ EXCHANGE RATE - (R/\$15.1513 - 15/03/2022)

EXCHANGE RATE USED IN BASIC FUEL PRICE



INTERNATIONAL PRODUCT PRICES OF BASKET USED IN BASIC FUEL PRICE



BASIC FUEL PRICE IN SA CENTS PER LITRE

